

EN SERIES SDS SERIES

GAS SENSOR- TRANSMITTERS

FEATURES

- 4-20 mA Output
- Optional Digital Display
- Sensors with Long-Term Stability
- Excellent Selectivity
- NEMA-4 Housing
- One-Person Calibration

ENMET Corporation's solution for dependable, cost-sensitive continuous monitoring applications.



EN-Series Sensor-Transmitter



SDS-Series Sensor-Transmitter



EN/SDS SERIES

GAS SENSOR-TRANSMITTERS

Specifications

Supply Voltage: 15-28 volts DC
 Output: 4-20 mA, linear over standard range
 Temperature Range: -20° to 40°C typical
 Humidity Range: 5 to 90% RH typical
 Pressure Range: Atmospheric +/- 10%

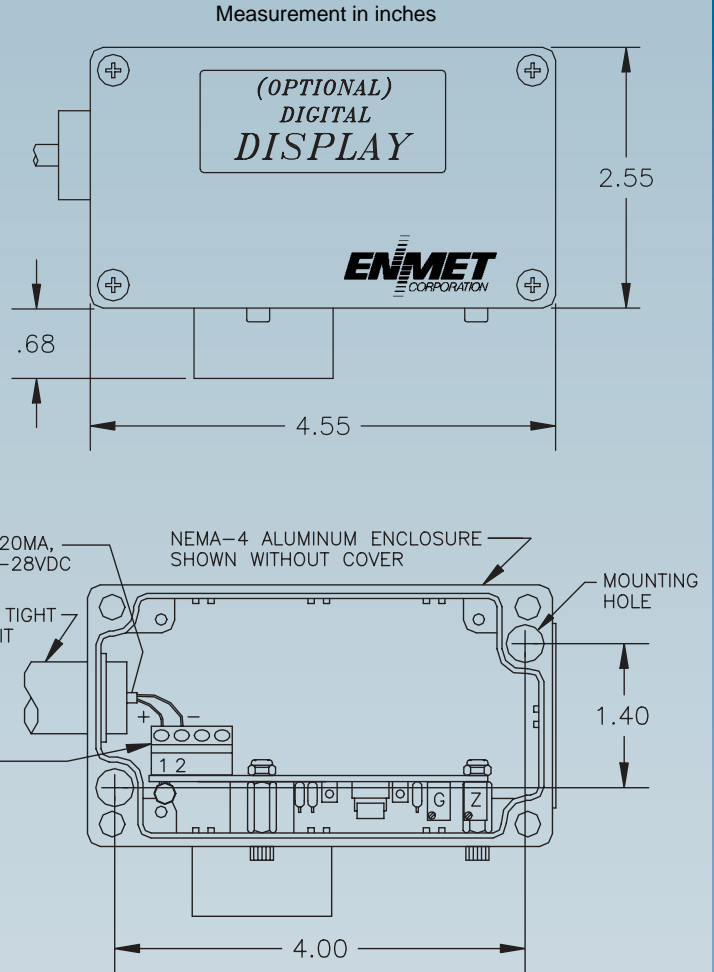
Gas	P/N suffix	Range (in ppm)	Resolution (if SDS)
Ammonia	-2400	0-100	1
Arsine	-4001	0-0.50	0.01
Carbon monoxide	-1200	0-100	1
Chlorine	-0100	0-10.0	0.1
Chlorine dioxide	-0850	0-1.0	0.1
Ethylene oxide	-5200	0-30.0	0.1
Fluorine	-1400	0-10.0	0.1
Hydrogen	-1500	0-1000	1
Hydrogen chloride	-0400	0-30.0	0.1
Hydrogen cyanide	-0300	0-30.0	0.1
Hydrogen fluoride	-0700	0-10.0	0.1
Hydrogen sulfide	-0200	0-100	1
Nitric oxide	-1750	0-100	1
Nitrogen dioxide	-1700	0-30.0	0.1
Oxygen	-1100	0-30.0%	0.1%
Ozone	-0800	0-1.00	0.01
Phosgene	-0600	0-1.00	0.01
Phosphine	-4002	0-1.00	0.01
Silane	-4003	0-30.0	0.1
Sulfur Dioxide	-0500	0-30.0	0.1

Other gases and ranges available.
 Combustible gases may be monitored with the EX-5000 Sensor-Transmitter. Contact factory with application requirements.

Ordering Information:

EN- Series P/N 10015-XXXX — without display
 SDS- Series P/N 10017-XXXX — with display

Represented by:



EX-5000 Combustible Gas Sensor-Transmitter

SPECIFICATIONS SUBJECT TO CHANGE WITHOUT NOTICE